

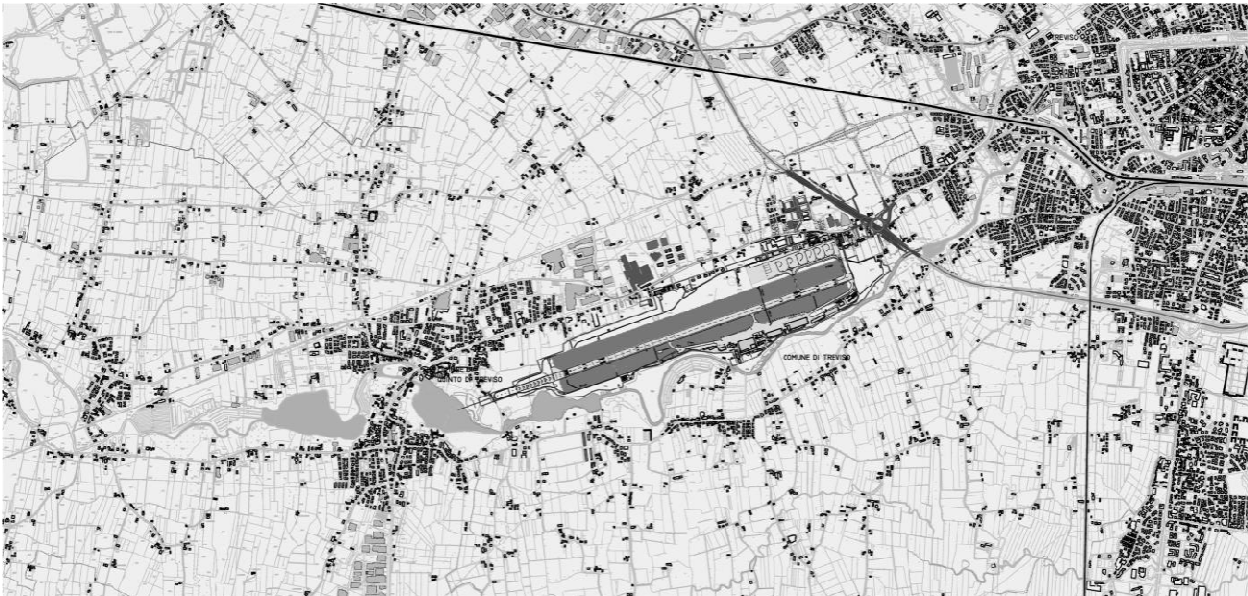


AEROPORTO DI TREVISO S.p.A.
Gruppo Save

Via Noalese, 63/E
31100 Treviso
Telefono +39 0422 315211
Telefax +39 0422 315219
www.trevisoairport.it
aertrespa@trevisoairport.it

Aeroporto di Treviso S.p.A.

AIRPORT CHARGES 2024





AERTRE Aripport charges

	Unità di misura	Fino al 30/11/2024	Dal 01/12/2024
PAX BOARDING			
Tariff adults			
of which INTER EU	<i>pax dep</i>	2,87	3,09
of which NON-EU	<i>pax dep</i>	3,44	3,71
Tariffs children			
of which INTER EU	<i>pax dep</i>	1,43	1,54
of which NON-EU	<i>pax dep</i>	1,72	1,85
SECURITY FEES PASSENGER AND CARRY ON BAG	<i>pax dep</i>	1,33	1,43
SECURITY FEES 100% CHECKED BAG	<i>pax dep</i>	0,52	0,56
PARKING	<i>ton/ora - sosta > 2h</i>	0,1258	0,1357
PRM (*)	<i>pax dep</i>	0,42	0,42
CARGO LOADING AND UNLOADING FEES (**)	<i>kg merce</i>	0,0191	0,0191
LANDING AND DEPARTURE (***)			
Tonnage tariffs < 25			
Comm. Av. & Gen. Av. INTER-EU / NON - EU	<i>per ton</i>	5,91	6,37
Tonnage tariff > 25			
Comm. Av. & Gen. Av. INTER-EU / NON - EU	<i>per ton</i>	7,45	8,03
EXCLUSIVE USE ASSETS (****)			
- uncovered areas vehicle parking	<i>€/mq mese</i>	7,28	7,85
- ramp vehicle storage	<i>€/mq mese</i>	11,73	12,65
- operating offices	<i>€/mq mese</i>	24,24	26,14
INTO PLANE FUELING	<i>€/litro</i>	0,00156	0,00168

Note:

(*) Fee in force, as per ENAC Note prot. 0158621-P dated 05/12/2023 starting from 4 February 2024. For the period 01.01.24-03.02.24 the fee in force for the 2023 year will be applied (0.53).

(**) Fee defined provisionally pursuant to the Ministerial Decree. of 2.9.1994 should there be an application need, as this activity is not currently carried out at the airport.

(***) The General Aviation tariff must be multiplied by two for the amount to be paid to the State pursuant to law no. 656 of 11/30/1994.

(****) The fee for the premises and operational spaces is to be understood as a cost per square meter on a monthly basis.